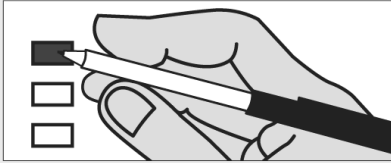


Chelan County, Washington
Sample Ballot
Special Election
April 28, 2015

Precinct 1

Instructions

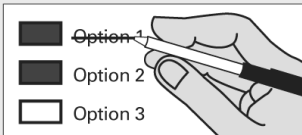
How to vote



Use a dark blue or black ink pen to completely fill in the box to the left of your choice.

Vote for one in each race. If you vote for more than one, no votes will be counted for that race.

If you make a mistake



Draw a line through the entire measure response or candidate's name.

Then you may make another choice.



Who donates to campaigns?

View contributors for candidates and measures

Public Disclosure Commission

www.pdc.wa.gov
Toll Free (877) 601-2828

Local Issue

Fire District

Fire District No. 1

Chelan County Fire District Proposition No. 1
Annexation of City of Wenatchee

Submitted by the City of Wenatchee and Chelan County Fire District No. 1 proposing the annexation of the City of Wenatchee into Chelan County Fire District No. 1.

Shall the City of Wenatchee be annexed to and be a part of Chelan County Fire Protection District No. 1, with an effective date of July 30, 2015?

- YES
 NO

City

City of Wenatchee

City of Wenatchee Proposition No. 1
Annexation into Chelan County Fire District No. 1

Submitted by the City of Wenatchee and Chelan County Fire District No. 1 proposing the annexation of the City of Wenatchee into Chelan County Fire District No. 1.

Shall the City of Wenatchee be annexed to and be a part of Chelan County Fire Protection District No. 1, with an effective date of July 30, 2015?

- YES
 NO

Parks & Recreation District

Manson Parks & Recreation District

Proposition 1

Will the Manson Parks and Recreation District be authorized to impose regular property tax levies of \$.23 or less per thousand dollars of assessed valuation for each of three consecutive years?

- Levy YES
 Levy NO

Sample Ballot 12000010100011

000000001102

Sample Ballot

0713031287



000000001393

Sample Ballot12000010200018



This page intentionally left blank



0713031287

Sample Ballot